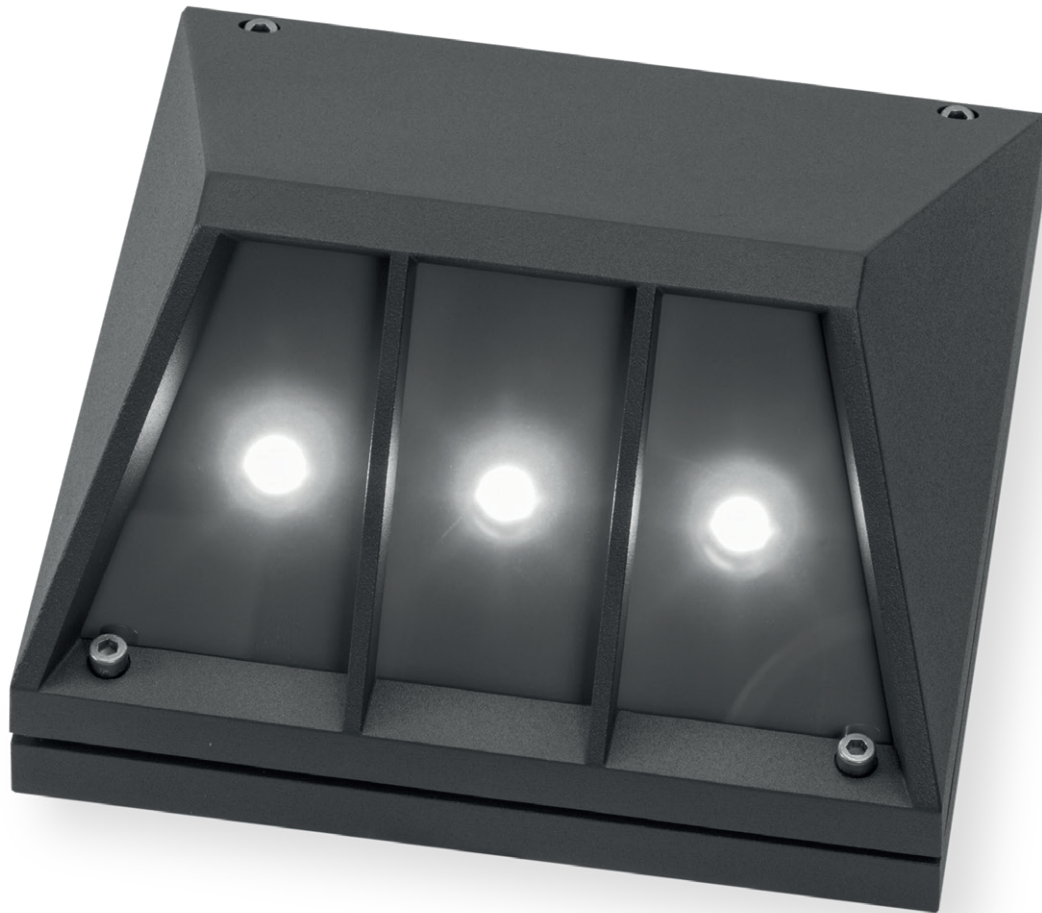


LED Master **LM1** IP65 LED



A product with two hearts. The platform of this high-quality diecast aluminium emergency luminaire is an enclosure body made by BEGA. To counteract direct glare, the LED Master LM1 has a satin finish glass cover, which has an output angle of 45°. Designed for lighting open areas outdoors.

LED Master **LM1**

SYSTEM LUMINAIRE RECHARGEABLE BATTERY LUMINAIRE

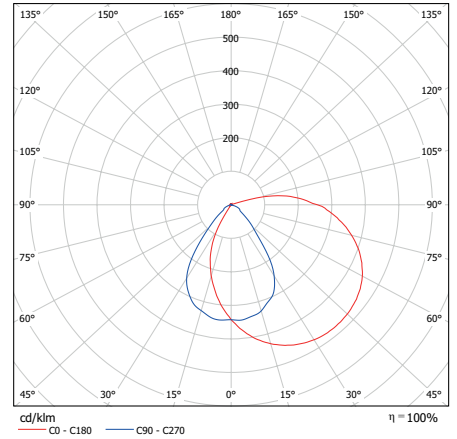
Degree of protection	IP65	
Class	I	
Enclosure material	Die cast aluminium	
Enclosure colour/surface	graphite	
Terminal block	3 x 2.5 [□] for through wiring	
Light source	3 x 1 W power LED	
Ambient temperature	-20° C to +40° C	0° C to +40° C
Connected load (AC/DC)	10.0 VA/5.5 W	5.6 VA
Supply voltage	230V ± 10 %, 50/60Hz/176-275 V DC	230V ± 10 %, 50/60 Hz
Rechargeable battery	3.6 V/2.5 Ah (NiCd)	

VERSIONS

1 h with auto-check with BUS check		•* •*
3 h with auto-check with BUS check		•* •*
8 h with auto-check with BUS check		•* •*
without monitoring module	•	
with monitoring module	•	
with DALI monitoring	•	

OPTIONS /ACCESSORIES

- Concrete adapter (for surface-mounted installation)
- Remote supply unit (rechargeable battery luminaire) for mounting in temperature controlled area.
Connection cable max. 4 m (2.5 mm²) provided on site.



LIGHTING of ESCAPE ROUTES – EN 1838 – t** = 1 m

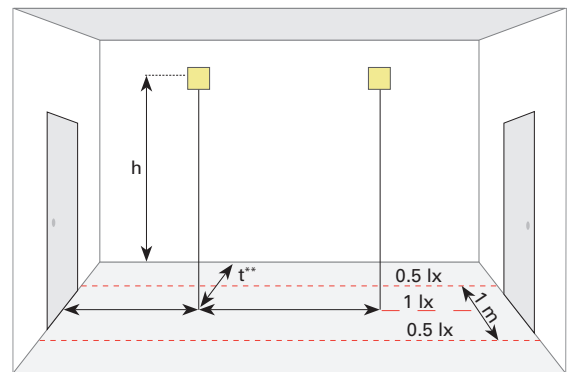
Installation height h [m]	System		1 h + 3 h + 8 h	System		1 h + 3 h + 8 h
	1 h + 3 h + 8 h	1 h + 3 h + 8 h		1 h + 3 h + 8 h	1 h + 3 h + 8 h	
2.00	2.00		Rechargeable battery values on request	4.75		Rechargeable battery values on request
2.50	2.25			5.35		
3.00	2.35			5.85		
3.50	2.45			6.25		
4.00	2.35			6.55		
4.50	2.15			6.70		
5.00	1.70			6.70		

LIGHTING of ESCAPE ROUTES – EN 1838 – t** = 2 m

Installation height h [m]	System		1 h + 3 h + 8 h	System		1 h + 3 h + 8 h
	1 h + 3 h + 8 h	1 h + 3 h + 8 h		1 h + 3 h + 8 h	1 h + 3 h + 8 h	
2.00	2.05		Rechargeable battery values on request	5.15		Rechargeable battery values on request
2.50	2.30			5.80		
3.00	2.45			6.30		
3.50	2.45			6.65		
4.00	2.35			6.90		
4.50	2.05			7.05		
5.00	1.55			7.05		

LIGHTING of ESCAPE ROUTES – EN 1838 – t** = 3 m

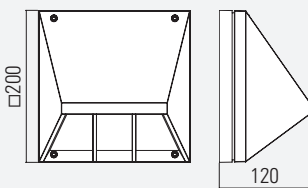
Installation height h [m]	System		1 h + 3 h + 8 h	System		1 h + 3 h + 8 h
	1 h + 3 h + 8 h	1 h + 3 h + 8 h		1 h + 3 h + 8 h	1 h + 3 h + 8 h	
2.00	1.65		Rechargeable battery values on request	5.25		Rechargeable battery values on request
2.50	1.90			5.80		
3.00	2.00			6.30		
3.50	1.90			6.60		
4.00	1.70			6.85		
4.50	1.25			6.90		
5.00	-			-		



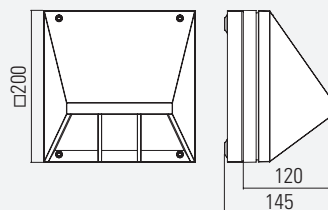
*t = distance from the wall to the middle of the escape route

All figures in metres from the middle of the luminaire

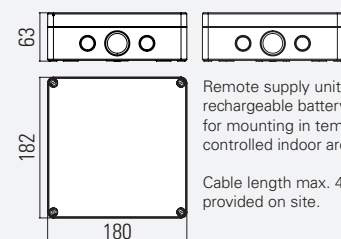
LM1W WALL MOUNTED



LM1W WALL MOUNTED WITH CONCRETE ADAPTER



*REMOTE SUPPLY UNIT (OPTIONAL)



Remote supply unit for rechargeable battery luminaire for mounting in temperature-controlled indoor area.

Cable length max. 4 m (2.5 mm²) provided on site.